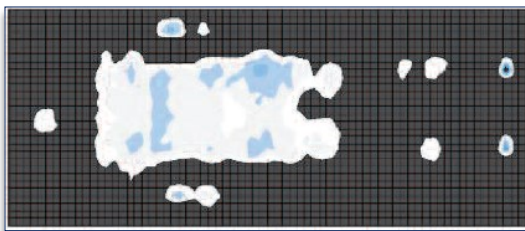


- **Dynamic Immersion**
- **True Low Air Loss**
- **Alternating Pressure**



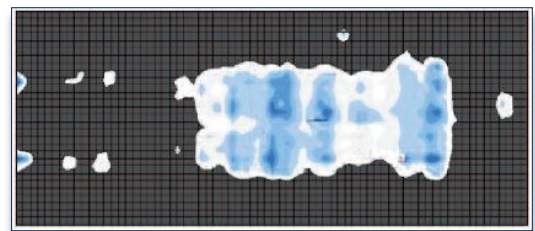
Featuring true low air loss, providing microclimate control, immersion/pulsation therapy, alternating pressure and massage, the Advanced WAVE™ Support Surface has become a proven and often preferred alternative to Air Fluidized Therapy. By continuously sensing and maintaining an optimal therapeutic setting, The WAVE™ automatically adjusts and readjusts for the patient as needed. It is the most effective means of multi-zoned, dynamic low interface pressure therapy in the market today.

Patient Laying Flat



Mapping* indicates the WAVE mattress maintained interface pressure within recommended therapeutic range (13~17mmhg) throughout the course of the study.

HOB at 30°



Mapping* the WAVE mattress maintained interface pressure within the recommended therapeutic range (13~ 17mmhg) for the majority of the study and never exceeded capillary closing pressure of 32mmhg.

**Mapping was conducted on an anatomically correct male, 5'9" tall, 175 lbs.*

Longer Immersion Time = Faster Healing and Recovery

WAVE™ Technology

Our proprietary line of therapeutic support surfaces featuring the innovative WAVE Technology™ was designed with clinical input to provide the highest levels of protection and functionality. When combined with our Freedom500™ and Freedom1000™ bed frames, our exclusive WAVE™ technology surfaces provide unprecedented levels of safety for both patients and caregivers.



Advanced WAVE™

For Treatment of ⁽¹⁾:

- Complicated wounds
- Flaps, grafts and burns
- Pain management

Features:

- Immersion/pulsation
- Alternating pressure
- Massage
- Microclimate control
- Non-heat generating
- Standard and bariatric sizes
- Battery Back-up (std 6 hrs / bariatric 4 hrs)

Models:

UMS ⁽²⁾:

- Length: 72"/76"/80"/84"
- Width: 36"
- Height: 8"
- Weight: 500 lbs.

XMS

- Length: 80"/85"/90"
- Width: 36"/42"/48"
- Height: 10"
- Weight: 1000 lbs.

VL

- Length: 80"/85"/90"
- Width: 36"
- Height: 8"



T-WAVE™

For Treatment of ⁽¹⁾:

- Pulmonary and cardiac complications
- Complicated wounds
- Flaps, grafts and burns
- Pain management

Advanced WAVE™ Features, plus:

- 90° radius, continuous full body lateral rotation
- Lateral side rail protection (12")
- Standard and bariatric sizes
- Battery Back-up (std 6 hrs / bariatric 4 hrs)

Models:

Standard

- Length: 72" - 80"
- Width: 36"
- Height: 10"
- Weight: 500 lbs.

XMS

- Length: 80" - 88"
- Width: 36" - 48"
- Height: 10"
- Weight: 1000 lbs.

VL

- Length: 80"/85"/90"
- Width: 36"
- Height: 10"
- Weight: 500 lbs.



Pediatric WAVE™

For Treatment of ⁽¹⁾:

- Traumatic birth defects
- Acute and chronic illness
- Deep tissue injuries
- Stage 2 – 4 wound care
- Prevention and treatment of moisture associated skin damage
- General pain management

Features / Benefits:

- Customizable low interface pressure based on patient's weight and height
- 2" Visco base for indwelling procedures
- Microclimate control
- Battery back-up system (6+ hours)
- Quiet operation
- True low air loss
- Dynamic immersion/pulsation Therapy
- Non-heat generating

Size

- 60" x 30" x 6"
- 1 - 100 lbs.

⁽¹⁾Contraindications: Unstable cervical neck, spine and pelvic girdle.

⁽²⁾Base can be configured to fit Step-Down, and V-Deck beds.